

# lynx<sup>eo</sup>

Wired to electrify industry

## **MOTIONLINE<sup>®</sup>**

Tray cables for dynamic and static application



# Applications and requirements

The tray cables, available as Servo Motor and Multicore cables, are suitable for dynamic applications for drag chain and moving machines as well for static applications.

They can also be installed in industrial plants to connect equipments without the employment of metal conduits with a significant installation cost and time reduction. They are also suitable for direct burial.

The tray cables are oil resistant, flame retardant according to UL 1581 sec. 1160 and CSA FT4. Thanks to UL/CSA listing, MTW, TC-ER and WTTC approval the cables are specifically designed for American and Canadian market. All cables are available with a **Special-PVC compound jacket for high performance according to UL 1277.**

- High performances up to 5 millions of cycles at 7,5 x d in drag chain
- Compliant with UL 1277
- TC-ER and MTW approved
- UL and CSA Listed
- Reach and RoHS-II conform
- Shorter installation time and effort
- Reduced cable variety and cost



## Technical characteristics

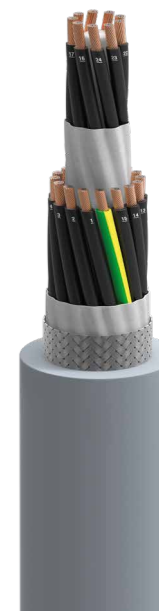
### CONTROL TRAY FOR STATIC APPLICATIONS

Application	Suitable for static application
Bending radius	Bending radius for occasional movement of 1.5x d
Insulation material	PVC + Nylon insulation (PA skin)
Jacket material	PVC compound jacket
Resistant to oils	Ace. to UL OIL RES 1
Flame retardant	UL 1581 section 1160 and CSA FT4
Shielding	Available in both version screened and un screened
Construction	Cross sections from 1 mm <sup>2</sup> to 70 mm <sup>2</sup> and from 2 to 25 cores
Approval	UL MTW; UL TC-ER 90°C 600V; UL wrrc 90°C 1 000V; UL DP.1; UL AWM 600V; C(UL) CIC/TC-ER
Standard	UL 1277 / UL 2277



### CONTROL TRAY FOR DYNAMIC APPLICATIONS

Application	Suitable for dynamic application
Cycles	Min. 5 Millions of cycles
Bending radius	7.5 x D 1mm <sup>2</sup> - 6mm <sup>2</sup> / 10 x D 10mm <sup>2</sup> - 35mm <sup>2</sup>
Speed	240 m/min 1mm <sup>2</sup> - 6mm <sup>2</sup> / 180 m/min 10mm <sup>2</sup> - 35mm <sup>2</sup>
Acceleration	10 m/s <sup>2</sup> 1mm <sup>2</sup> - 6mm <sup>2</sup> / 5 m/s <sup>2</sup> 10mm <sup>2</sup> - 35mm <sup>2</sup>
Jacket material	Special PVC Compound
Resistant to oils	Oil Resistance I
Flame retardant	UL 1581 section 1160 and CSA FT4
Shielding	Available in both version screened and un screened
Construction	Cross section from 1 mm <sup>2</sup> to 35 mm <sup>2</sup> and from 2 to 25 cores
Approval	UL MTW; UL TC-ER 90° 600V; UL WTTC 90°C 1000V; UL DP-1; UL AWM 600V; C(UL) CIC/TC-ER
Standard	UL 1277



### SERVO MOTOR TRAY FOR DYNAMIC APPLICATIONS

Application	Suitable for dynamic application
Cycles	Min. 5 Millions of cycles
Bending radius	7,5 x D 1-10mm <sup>2</sup> / 10 x D 16 -35mm <sup>2</sup>
Speed	240 m/min 1-10mm <sup>2</sup> / 180 m/min 16-35mm <sup>2</sup>
Acceleration	10 m/s <sup>2</sup> 1-10mm <sup>2</sup> / 5m/s <sup>2</sup> 16-35mm <sup>2</sup>
Jacket material	Special PVC Compound
Resistant to oils	Oil Resistance I
Flame retardant	UL 1581 section 1160 and CSA FT4
Shielding	Available in both version screened and un screened
Construction	Cross section from 1 mm <sup>2</sup> to 35 mm <sup>2</sup> and from 2 to 25 cores
Approval	UL MTW; UL TC-ER 90° 600V; UL WTTC 90°C 1000V; UL DP-1; UL AWM 600V; C(UL) CIC/TC-ER
Standard	UL 1277





## Wired to electrify industry

**Industry is everywhere.** Making our daily lives easier. Fostering progress. Moving the world. Industry plays a key role in shaping a better future.

**We have been serving industry for generations.** Today, we are committed to making it more efficient, more reliable and more sustainable.

**Our cables are essential to the machines developed by global industry champions.** They serve as the spinal cord of mission-critical infrastructures, assets and applications. Our clients rely on our advanced technologies and our industrial excellence to bring their machines to life.

**In the century since we were founded,** we have risen to a leading position in our markets.

**Now, as a standalone company,** we embark on a new journey with even greater agility, more focus and stronger customer intimacy.

**For industry leaders,** we are ever-evolving partners in an ever-changing world.

**Together,** we build connections beyond cables.

**From energy transition to mobility and automation,** our teams are tackling the greatest challenges of our times.

**Our name is Lynxéo.** We have local roots and global reach.

**Connected to our customers,** committed to excellence and progress, we are wired.

---

**Wired to electrify the industries that move the world.**

FOLLOW US



[www.lynxeogroup.com](http://www.lynxeogroup.com)