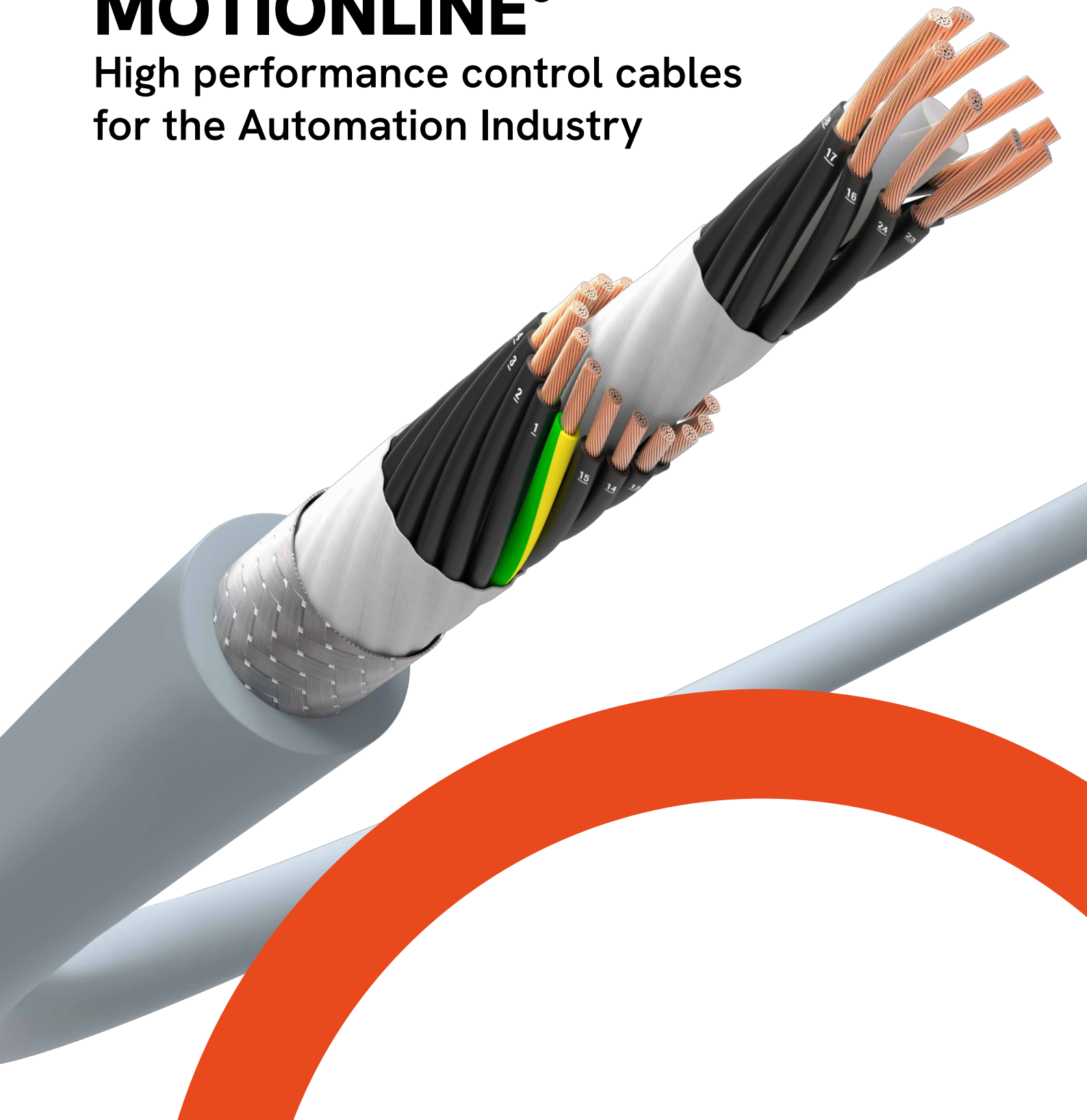


lynx^{eo}

Wired to electrify industry

MOTIONLINE[®]

High performance control cables
for the Automation Industry





Applications and requirements

Lynxéo produces and develops cables for the Automation market for many years. Competencies and partnerships with the main players of this sector, allow Lynxéo to be constantly up-to-date on market's needs and new trends.

Lynxéo MOTIONLINE® control cables are designed for continuous moving applications. Thanks to the insulation material in TPE elastomer, a thermoplastic polymer resistant to abrasion and more durable than PVC, Lynxéo guarantees better dynamic performances

in terms of number of cycles with lower bending radius also at low temperature. Key characteristics are also that the outer diameter can be decreased and the electrical capacitance is lower than using PVC. These cables are designed for continuous moving applications where good flexibility and oil resistance property are requested. Lynxéo control cables are used in track systems for machine tools, wood machines, automatic lines and many other applications where best performances with the small dimensions are needed.

Control cables requirements of machine makers and systems integrators

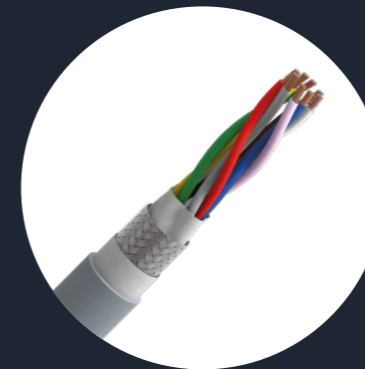
- High mechanical performance & small dimensions
- Jacket material highly resistant to tear and abrasion
- Reliability to avoid the stop of production process
- Oil resistance and flame retardancy
- High flexibility
- Continuous moving with low bending radius



MOTIONLINE® control cables complete offer

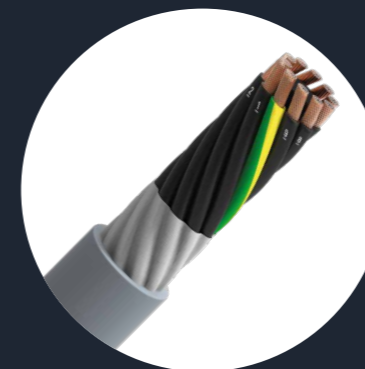
Lynxeo' answer

- High performances up to 10 millions of cycles at 6,5 x d in drag chain
- Compliant with UL and CSA standard
- High resistance to oils, fats and chemicals
- Resistance to abrasion
- Reliability proven in real life application and by extensive testing



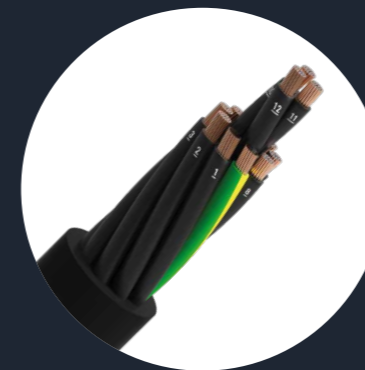
MOTIONLINE ADVANCED MOVETRONIC & MOTIONLINE PREMIUM MOVETRONIC

Data and signal transmission cables for chain application, Suitable for measuring and control at production lines, all types of machine.



MOTIONLINE CONTROL 80°C PUR & PVC MATERIAL

Control cables for power chain application or moving machine parts up to 1000V, suitable for measuring and control, power circuits for electrical equipment in automation, assembly lines, all kinds of machines.



Tray cables

Suitable for static and dynamic application outside and inside cable tray, wind turbines TC-ER and MTW approved, UL Listed.



Our control cables

High performance material for dynamic performance

DYNAMIC PERFORMANCE

Properties	TPE-PUR
Cycles	10 Millions
Bending Radius	6,5 xd
Speed	600 m/min
Acceleration	60 m/s ²

Properties	TPE-PVC
Cycles	5 Millions
Bending Radius	6,5 xd
Speed	300 m/min
Acceleration	20 m/s ²

DYNAMIC PERFORMANCES IN DETAILS

Cable type	Cycles	Bending radius	Speed	Acceleration	Jacket
LC Movepower	10 Millions	6,5 x d	60 m/s ²	600 m/min	PUR
Movetronic PU R	10 Millions	6,5 x d	60 m/s ²	600 m/min	PUR
LC Cablopower	5 Millions	6,5 x d	20 m/s ²	300 m/min	PVC
Movetronic PV C	5 Millions	6,5 x d	20 m/s ²	300 m/min	PVC

MOTIONLINE PREMIUM MOVETRONIC (PUR) - UL 80°C - 300V	
Application	Suitable for extremely dynamic application
Cycles	Min. 10 Millions of cycles
Bending radius	6,5 x d
Speed	Max 600 m/min
Acceleration	Max 60 m/s ²
Jacket material	PUR jacket
Resistant to oils	EN 50363-10-2
Flame retardant	IEC 60332-1; FTI; UL 1581; EN 50265-2-1
Shielding	Available in bath version: screened and unshielded
Construction	Cross section from 0, 14 mm ² to 0,34 mm ² and from 2 to 25 conductors
Nominal voltage	300V
Approval	UL/CSA

MOTIONLINE LC MOVEPOWER (PUR) - UL 80°C - 1000V	
Application	Suitable for extremely dynamic application
Cycles	Min. 10 Millions of cycles
Bending radius	6,5 x d
Speed	Max 600 m/min
Acceleration	Max 60 m/s ²
Jacket material	PUR jacket
Resistant to oils	EN 50363-10-2
Flame retardant	IEC 60332-1; FTI; UL 1581; EN 50265-2-1
Shielding	Available in bath version: screened and unshielded
Construction	Cross section from 1,5 mm ² to 35 mm ² and from 2 to 12 conductors
Nominal voltage	1000V
Approval	UL/CSA



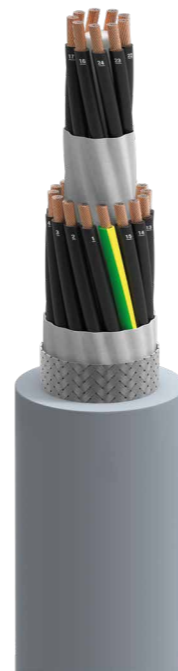
CONTROL TRAY FOR STATIC APPLICATIONS

Application	Suitable for static application
Bending radius	Bending radius for occasional movement of 1.5x d
Insulation material	PVC + Nylon insulation (PA skin)
Jacket material	PVC compound jacket
Resistant to oils	Ace. to UL OIL RES 1
Flame retardant	UL 1581 section 1160 and CSA FT4
Shielding	Available in both version screened and un screened
Construction	Cross sections from 1 mm ² to 70 mm ² and from 2 to 25 cores
Approval	UL MTW; UL TC-ER 90°C 600V; UL wrrc 90°C 1 OOOV; UL DP.1; UL AWM 600V; C(UL) CIC/TC-ER
Standard	UL 1277 / UL 2277



CONTROL TRAY FOR DYNAMIC APPLICATIONS

Application	Suitable for dynamic application
Cycles	Min. 5 Millions of cycles
Bending radius	7.5 x D 1mm ² - 6mm ² / 10 x D 10mm ² - 35mm ²
Speed	240 m/min 1mm ² - 6mm ² / 180 m/min 10mm ² - 35mm ²
Acceleration	10 m/s ² 1mm ² - 6mm ² / 5 m/s ² 10mm ² - 35mm ²
Jacket material	Special PVC Compound
Resistant to oils	Oil Resistance I
Flame retardant	UL 1581 section 1160 and CSA FT4
Shielding	Available in both version screened and un screened
Construction	Cross section from 1 mm ² to 35 mm ² and from 2 to 25 cores
Approval	UL MTW; UL TC-ER 90° 600V; UL WTTC 90°C 1000V; UL DP-1; UL AWM 600V; C(UL) CIC/TC-ER
Standard	UL 1277 / UL 2277



SERVO MOTOR TRAY FOR DYNAMIC APPLICATIONS

Application	Suitable for dynamic application
Cycles	Min. 5 Millions of cycles
Bending radius	7,5 x D 1-10mm ² / 10 x D 16 -35mm ²
Speed	240 m/min 1-10mm ² / 180 m/min 16-35mm ²
Acceleration	10 m/s ² 1-10mm ² / 5m/s ² 16-35mm ²
Jacket material	Special PVC Compound
Resistant to oils	Oil Resistance I
Flame retardant	UL 1581 section 1160 and CSA FT4
Shielding	Available in both version screened and un screened
Construction	Cross section from 1 mm ² to 35 mm ² and from 2 to 25 cores
Approval	UL MTW; UL TC-ER 90° 600V; UL WTTC 90°C 1000V; UL DP-1; UL AWM 600V; C(UL) CIC/TC-ER
Standard	UL 1277 / UL 2277



MOTIONLINE LC CABLOPOWER (PVC) - UL 80°C - 1000V

Application	Suitable for dynamic application
Cycles	Min. 5 Millions of cycles
Bending radius	6,5 x d
Speed	Max 300 m/min
Acceleration	Max 20 m/s ²
Jacket material	PVC jacket
Resistant to oils	EN 50363-4-1
Flame retardant	IEC 60332-1; FTI; UL 1581; EN 50265-2-1
Shielding	Available in bath version: screened and un screened
Construction	Cross section from 1,5 mm ² to 35 mm ² and from 2 to 12 conductors
Nominal voltage	1000V
Approval	UL/CSA



MOTIONLINE ADVANCED MOVETRONIC (PVC) - UL 80°C - 300 V

Application	Suitable for extremely dynamic application
Cycles	Min. 5 Millions of cycles
Bending radius	6,5 x d
Speed	Max 600 m/min
Acceleration	Max 60 m/s ²
Jacket material	PVC jacket
Resistant to oils	EN 50363-10-2
Flame retardant	IEC 60332-1; FTI; UL 1581; EN 50265-2-1
Shielding	Available in bath version: screened and un screened
Construction	Cross section from 0, 14 mm ² to 0,34 mm ² and from 2 to 25 conductors
Nominal voltage	300V
Approval	UL/CSA





Lynxeo Expertise

In the Lynxeo Motion Application Center (MAC) located in Nuremberg, Lynxeo develops and tests high quality automation cables, to provide its customers with reliable cables solutions. Thanks to this, Lynxeo is able to control the

complete life cycles of a cable and to optimize copper conductors, jacket materials, cable design and production process to achieve the best results in terms of cost and durability.

Lynxeo Capabilities

With four plants strongly dedicated to the automation industry, located in Europe (Germany- Italy), China and USA, Lynxeo is able to support its customers providing a full range of automation cables.

The quality and reliability of Lynxeo cables and services result from yearlong partnerships with robot producers, leading component OEMs and machine tool producers.





Wired to electrify industry

Industry is everywhere. Making our daily lives easier. Fostering progress. Moving the world. Industry plays a key role in shaping a better future.

We have been serving industry for generations. Today, we are committed to making it more efficient, more reliable and more sustainable.

Our cables are essential to the machines developed by global industry champions. They serve as the spinal cord of mission-critical infrastructures, assets and applications. Our clients rely on our advanced technologies and our industrial excellence to bring their machines to life.

In the century since we were founded, we have risen to a leading position in our markets.

Now, as a standalone company, we embark on a new journey with even greater agility, more focus and stronger customer intimacy.

For industry leaders, we are ever-evolving partners in an ever-changing world.

Together, we build connections beyond cables.

From energy transition to mobility and automation, our teams are tackling the greatest challenges of our times.

Our name is Lynxéo. We have local roots and global reach.

Connected to our customers, committed to excellence and progress, we are wired.

Wired to electrify the industries that move the world.

FOLLOW US



www.lynxeogroup.com